

Azaleas
Broad Leaved Evergreens
Flowering and Shade Trees
General Ornamentals

Wholesale Price List

THE SIGN OF THE TANKARD

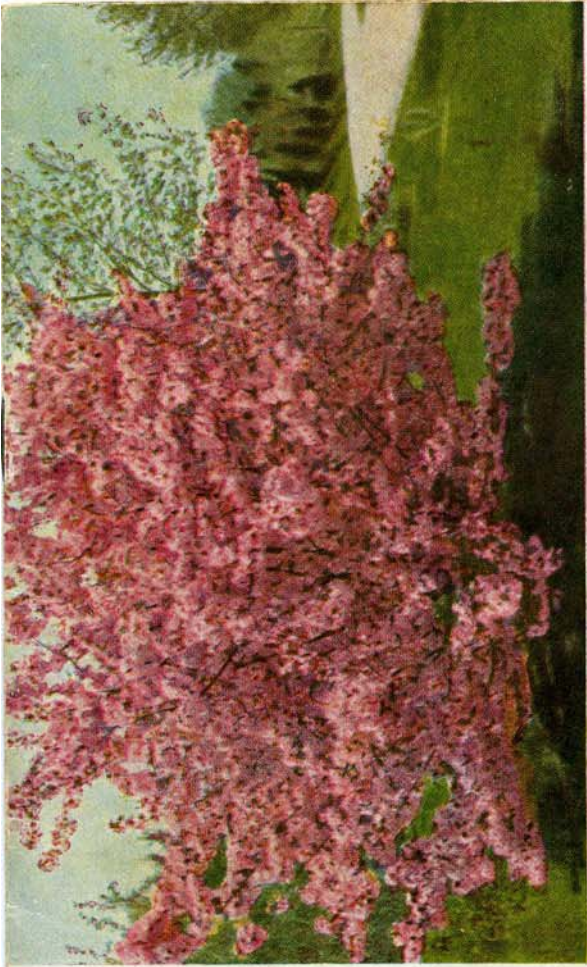


IS THE SIGN OF EXCELLENCE

Tankard

THE TANKARD NURSERIES

Exmore, Virginia



Flowering Crabs — A Tankard Specialty

SPRING 1961

Members



VIRGINIA NURSERYMEN'S ASSOCIATION

SOUTHERN NURSERYMEN'S ASSOCIATION

THE TANKARD NURSERIES

Exmore, Virginia

L. D. TELEPHONE: Office - Gilbert 2-6211

J. E. TANKARD: Res. - Gilbert 2-6317

S. D. TANKARD, Jr.: Res. - Gilbert 2-6889

J. E. TANKARD, Jr.: Res. - Gilbert 2-6779

Located on the Famous

Eastern Shore of Virginia

Where "Heaven and Earth Meet" in the words of Capt. John Smith who described this land as the best suited for man's habitation of any of the many places he had been.

"There is no substitute for experience." Sam Tankard, Jr. of the Tankard Brothers has been in the Nursery business for 33 years. He and brother John and John, Jr. give close supervision to growing good stock and careful attention to filling your orders.

Tankard's is not the largest nursery in the country, but it is one of the best.

The Eastern Shore and the Del-Mar-Va Peninsula have become a great nursery center. Come and find all your wants.

WHOLESALE PRICE LIST

SPRING 1961

Within easy trucking distance of Eastern points, but we can ship anywhere by express, freight, or truckload.

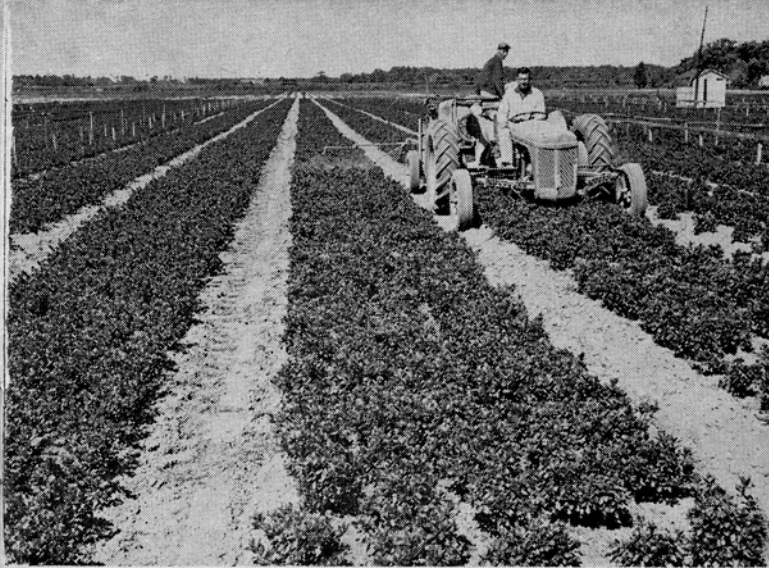
We have customers in 17 states, and have received many compliments on our plants and our service.

Terms and Conditions:- Prices are F. O. B. Exmore, Virginia Packing in boxes and bales additional, subject to prior sale, and our confirmation of the order. Terms are cash with order or 1/4 cash with order, balance C. O. D., unless credit has been established with us.

50 plants at 100 rate; 500 at 1000 rate.

WE CAN DIG AND SHIP ALMOST ANY WEEK DURING THE WINTER, SPRING OR FALL. However, we advise you to let us have your order at once so we may reserve stock for you. Many items are scarce this season.

We box Azaleas and pack deciduous stock for L. C. L. shipment by Rail and to some destinations by truck lines, but cannot undertake to box and ship larger evergreens. These are offered only for bulk shipment by truck or car load.



Azaleas getting proper treatment by Charlie Dennis, field superintendent, and another 14 year supervisor, Rudolph Brady.

MULTIPLE BUDS

Many varieties of Tankard Azaleas are notable for their clusters of buds instead of individual flower buds which are normally produced on plants in some other sections. These clusters give that full flowering effect so much desired in Azaleas.

The Tankard Brothers, John, Sr. left, and Sam (Jr.) right in a patch of *Ligustrum lucidum recurvifolium*.



AZALEAS

Quality Remains Excellent
For Forcing and Landscape Planting

THOUSANDS OF BEAUTIFUL PLANTS, BUSHY, WELL BUDDED, GROWN IN NATURAL AZALEA SOIL IN THE FIELD, UNDER FULL SUN. PLACE YOUR ORDER NOW TO BE SURE OF GETTING YOUR REQUIREMENTS, as orders have already taken a large part of this year's crop.

1000 rates apply on orders for 500 or more Azaleas. 100 rates apply on all orders to be packed for shipment in boxes, packing charge additional. Azaleas may be assorted as you desire to obtain the quantity prices, except that the 1 yr. sizes may not be used to obtain quantity prices on the larger plants.

KURUME VARIETIES

Note sizes available in each variety

AMOENA - Hose-in-hose, rosy purple flowers. Very Hardy. 6-8 in. to 15-18 in.

FLAME - Hose-in-hose bright madder red. Tall grower. Few, 8-10 in., 10-12 in.

HINODEGIRI - Brilliant Red. The standard hardy Azalea. 8-10 in., 12-15 in., 15-18 in. heavy, 18-21 in.

SHERWOODI - Strong growing. Pretty orchid-purple. Few 15-18 in.

PRICES: Above Varieties.

Deduct 10¢ per plant if burlap wrapping is not wanted.

	100	250-	1000
	rate	499	rate
6- 8 in. spread, each B&B	.90	.80	.75
8-10 in. spread, each B&B	1.05	.95	.90
10-12 in. spread, each B&B	1.30	1.20	1.15
12-15 in. spread, each B&B	1.70	1.55	1.50
15-18 in. each Amoena & Sherwoodi B&B	2.20	2.05	2.00
15-18 in. heavy, older, Hinodegiri, B&B	2.70	2.55	2.50
18-21 in. heavy, older, Hinodegiri, B&B	3.45	3.30	3.25

ONE YEAR FIELD GROWN AZALEAS

Well branched and budded, but not heavy specimens like above grades.

Available in Coral Bells, Glacier, Hinodegiri, Paestrina, Rose Bud, Snow.

Prices: Deduct 6¢ each if burlap or Polyethylene wrapping is not wanted.

	100	250-	1000
	rate	499	rate
3-4 in. each B&B	.41	.38½	.36
4-6 in. each B&B	.51	.48½	.46
4-8 in. each B&B Glacier, Paestrina	.51	.48½	.46

These sizes cannot be used to make up quantity prices on larger sizes.

INDICA AZALEAS

FORMOSA - Very showy large purple flowers, but not hardy north. Heavy, specimen plants, especially in the larger sizes.

18-24 in. B&B	1.60
2-2½ ft. spread B&B	2.25
2½-3 ft. spread B&B	2.75
3-3½ ft. spread B&B	3.25
3½-4 ft. spread B&B	3.85

Special price will be made on entire lot larger sizes.

OTHER KURUME AZALEAS

HINO-CRIMSON - Similar to, but far superior to Hinodegiri because of its deep crimson color which does not fade. Hardiness equal to or surpassing Hinodegiri. The choice of all who see it. Marvelous crimson color, compactness, good foliage, vigor, hardiness. In addition is an excellent forcer and an early one. HINO-CRIMSON HAS EVERYTHING. 6-8 in. to 12-15 in.

SNOW - Hose-in-hose snow white flowers. Good grower-glossy foliage. 6-8 in., 8-10 in.

ASSORTED VARIETIES

APHRODITE - A Glenn Dale Hybrid. Pale rose-pink. 8-10 in. to 15-18 in.

ATALANTA - A Kaempferi Hybrid. Purple, upright, vigorous. 8-10 in. to 18-24 in. height.

BUCCANEER - A Glenn Dale Hybrid. Dazzling orange-red flowers of large size. Truly outstanding. Blooms a week or ten days later than Hinodegiri. Excellent foliage. 6-8 in. to 12-15 in.

CARMEN - A Kaempferi Hybrid. Large rose color. 8-10 in. to 15-18 in. height.

ELIZABETH GABLE - Salmon-pink flowers on a vigorous growing Gable Hybrid. Few 6-8 in. and 8-10 in.

FRIGID - White. A Deerfield Hybrid similar to Snow but hardier. 6-8 in. to 10-12 in.

GAIETY - A Glenn Dale Hybrid. Light rose-pink. 8-10 in., 10-12 in., 12-15 in., 21-24 in.

GLACIER - Very attractive white flowers, vigorous grower, handsome foliage. A Glenn Dale variety. 8-10 in. to 15-18 in.

GREETING - A Glenn Dale Hybrid. Brilliant coral-rose. 6-8 in. to 12-15 in.

PALESTRINA - (Wilhelmina Vuyk) - A Vuykiana variety. Single white flowers 2-2½ inches across in abundance on a vigorous upright grower. We have seen Paestrina absolutely undamaged beside Ledi-folia Alba which had been severely hurt by cold weather. 6-8 in. to 15-18 in. height.

PIXIE - Pink and White variegated flowers. A very interesting novelty. 6-8 in.

POLAR - A deerfield Hybrid hardy. Salmon-red, vigorous. 8-10 in. to 15-18 in.

ROSE GREELY - A Gable Hybrid. Hose-in-hose white. 8-10 in. and 10-12 in.

PRICES: Coral Bells, Hexe, Hino-Crimson, Snow, and above Assorted Varieties.

Deduct 10¢ per plant if burlapping is not wanted.

	100	250-	1000
	rate	499	rate
6- 8 in. each B&B	.95	.85	.80
8-10 in. each B&B	1.15	1.05	1.00
10-12 in. each B&B	1.40	1.30	1.25
12-15 in. each B&B	1.80	1.65	1.60
15-18 in. each B&B	2.20	2.05	2.00
18-24 in. each B&B Atalanta	2.70	2.55	2.50
21-24 in. each B&B Gaiety	4.25	4.10	4.00



A. C. Brady, one of our tried and true employees, posing with *GARDENIA RADICANS STRICTA*. This is somewhat more hardy, than straight radicans. Nothing can be finer for the modern low house.

BROADLEAVED EVERGREENS

EACH PER 10

ABELIA GRANDIFLORA. Specimen grade, feathered to the ground.

18-24 in. ----- 1.50
2-3 ft. ----- 2.00

AUCUBA JAPONICA. Green-shade lover.

18-24 in. 1 or 2 canes ----- 1.25
2-2½ ft. 1 or 2 canes ----- 1.75
3-3½ ft. somewhat slender ----- 3.00

AUCUBA JAPONICA AUREA MACULATA.

Gold Dust Aucuba. Shade lover and favorite foliage for "arrangements".

15-18 in. 1 or 2 canes ----- 1.25

BERBERIS JULIANA. Evergreen Barberry.

18-24 in. ----- 2.00
2-2½ ft. ----- 2.50
2½-3 ft. ----- 3.25

BERBERIS JULIANA NANA. Evergreen Barberry.

Slower growing, more hardy, deeper green, and more compact than regular Juliana.

15-18 in. ----- 2.00
18-24 in. ----- 2.50

ELEAGNUS PUNGENS FRUITLANDI. Root pruned. Few.

2-3 ft. ----- 2.50

EUONYMUS JAPONICA. Evergreen, upright, hardy, excellent for seashore planting.

15-18 in. bushy plants \$1.15 \$100.00 per 100
2-2½ ft. ----- 1.75
2½-3 ft. ----- 2.00

EUONYMUS PATENS (Kiautschovicus)

"Carrier" type with more nearly evergreen leaves. Bears orange-red berries. Few.

18-24 in. ----- 1.50
2-2½ ft. ----- 2.25



Specimen plants of *Ilex Burfordi* photographed with John E. Tankard, Jr. and Jack Storrs.

GARDENIA FLORIDA. The hardy type that grows outside here and is a prolific bloomer. Heavy plants.

1½-2 ft. breadth ----- 1.75
2-2½ ft. breadth ----- 2.00
2½-3 ft. breadth ----- 3.00

GARDENIA RADICANS STRICTA. Low spreading plant with fine textured foliage and miniature Gardenia flowers. Not hardy North.

15-18 in. spread ----- 1.50
18-24 in. spread ----- 2.00
2-2½ ft. spread ----- 3.00

ILEX AQUIFOLIUM. English Holly. Female plants. "Recurva" and other varieties.

18-24 in. breadth or height ----- 6.00
2-2½ ft. breadth or height ----- 7.50
2½-3 ft. breadth or height ----- 10.00
Few larger.

ILEX AQUIFOLIUM. "J. C. Van Tol". Female plants. This is a good fruiting hardy English Holly with somewhat flat leaves and a limited number of spines. Breadth or height.

2-2½ ft. ----- 7.50
2½-3 ft. ----- 10.00

ILEX CORNUTA. Chinese Holly. Nice dense plants. Specimen grade. Root and top pruned.

18-24 in. ----- 3.00
2-2½ ft. ----- 4.00
3-3½ ft. ----- 10.00 to 12.50
Few larger.

ILEX CORNUTA BURFORDI. Burford Holly. Female plants. Root pruned to stand transplanting. Excellent foliage.

Specimen Grade
1½-2 ft. ----- 3.00
2-2½ ft. ----- 4.00
2½-3 ft. ----- 5.00 to 6.50
Few larger.

EACH PER 10

ILEX CRENATA CONVEXA. (bullata)

Convex-leaf Japanese Holly. Pruned plants.

12-15 in. spread	1.65
15-18 in. spread	2.00
18-24 in. spread	2.75

ILEX CRENATA HYBRID "Hadlock". This is a very pretty upright growing Ilex with leaves that resemble Convexa and Hetzi as they are somewhat convex. Their small size gives the plant a fine texture. It is graceful, different, useful.

18-24 in.	2.50
-----------	------

ILEX CRENATA MICROPHYLLA. Little-leaf Japanese Holly. Excellent plants with good color. Pruned and shapely.

18-24 in.	3.00
2-2½ ft.	4.00

Columnar type **MICROPHYLLA.** Larger leaf.

2½-3 ft.	4.50
3-3½ ft.	6.00

* **"BOXWOOD HOLLY"****ILEX CRENATA ROTUNDIFOLIA.** Extra

fine pruned plants. Measured in breadth or height whichever is greater. Low prices for quality material again this season.

15-18 in.	1.85
18-24 in.	2.35
2-2½ ft.	3.35
2½-3 ft.	4.50
3-3½ ft.	6.65

100 or more 10% Discount

* **"BOXWOOD HOLLY"** is the name that has been popularized in Atlanta, Ga., vicinity for this most useful Ilex, and we suggest you use it as an easy name for customers to learn - thereby stepping up sales.

ILEX OPACA. American Holly. Limited quantity.

Root pruned and top pruned.

Female — Practically Sold Out.

Male

4-5 ft.	4.00 to 6.50
5-6 ft.	6.50 to 9.50
6-7 ft.	9.50 to 13.50

Few larger priced individually

ILEX OPACA EAST PALATKA. A Southern Hybrid of fast growth and few spines on leaves. Female

3-4 ft.	4.00
4-5 ft.	5.00
5-6 ft. Few	6.00

ILEX VOMITORIA FEMINA. Youpon Holly. Bears a profusion of red berries on a fast growing plant with foliage similar to Crenata.

5-6 ft.	6.00
6-7 ft.	7.50

LAUROCERASUS SCHIPKAENSIS REYNVANNI. Dwarf "Cherry" Laurel. Hardy. Good winter color. Limited quantity. Root pruned.

18-24 in.	2.50
2-2½ ft.	3.25
3-3½ ft.	4.00



ILEX ROTUNDIFOLIA



Malus Hopa, justly admired by John Tankard, Jr. The trees are 8 to 10 ft. or more tall, straight, full, handsome, Priced to sell before they get too big.



Osmanthus aquifolium (illicifolium). Showing well branched plants of this deservedly popular hardy broadleaved evergreen.

LIGUSTRUM LUCIDUM. "Wax Leaf". Our production has gone primarily to the superior "recurvifolium" variety of lucidum, but we have a limited number of the regular type in various sizes at same prices as "recurvifolium" below.

LIGUSTRUM LUC. RECURVIFOLIUM. Darker green leaves with curved markings. Very choice variety. Splendid pruned plants, well filled, good color. Measured in height or breadth, whichever is greater.

1½-2 ft. -----	1.75
2-2½ ft. -----	2.25
2½-3 ft. -----	3.00
3-3½ ft., few -----	4.00
Few larger.	



Plant patent No. 1402. Dwarf spreading growth with leaves thickly set on the branches makes this variety very useful. Heavy, pruned, specimen grade.
18-24 in. spread ----- 2.50
Few larger.

MAGNOLIA GRANDIFLORA. Southern Evergreen Magnolia. Root pruned. Very few left.
4-4½ ft. ----- 5.50
4½-5 ft. ----- 7.50 to 10.00
5-6 ft. ----- 10.00 to 13.50
Few larger trees.

NANDINA DOMESTICA. We have a large supply of Nandinas and they are very nice. Use Colorful Nandinas For That Exotic Effect So Much In Vogue For Modernistic Plantings.
18-24 in. ----- 1.25 1.50
2-2½ ft. ----- 1.50 2.00
2½-3 ft. ----- 2.00 3.00
3-4 ft. ----- 3.75
4-4½ ft. ----- 4.50

OSMANTHUS AQUIFOLIUM. (Illicifolium). Holly leaf Osmanthus. Well branched. An excellent evergreen for Long Island planting.

1½-2 ft. -----	2.50
2-2½ ft. -----	3.00
2½-3 ft. -----	3.75
3-3½ ft. -----	4.50

OSMANTHUS FORTUNEI. Very nice plants. Not as hardy as Aquifolium.

2-2½ ft. -----	2.50
2½-3 ft. -----	3.00
3- 4 ft. -----	3.75
4-4½ ft. -----	4.75

CONIFEROUS EVERGREENS

All Conifers pruned or sheared, with excellent form and color. All B&B.

EACH PER 10

JUNIPERUS CH. PFITZERIANA COMPACTA.

Soft, compact, low growing variety, superior to regular Pfitzer. Root and top pruned.

18 in. -----	2.00
18-24 in. few -----	2.50
Few larger	

TAXUS CUSPIDATA. Japanese Yew. Very nice pruned plants.

18-24 in. -----	3.50
-----------------	------

TAXUS MEDIA HATFIELDI. Pruned plants.

1½-2 ft. few -----	3.50
--------------------	------

TAXUS MEDIA HICKSI. Hick's Yew. Pruned, Stocky, quite broad for height.

21-24 in. -----	3.25
2-2½ ft. -----	4.00

TAXUS INTERMEDIA T - 31. An excellent bush or semi-vase form Taxus with fine textured deep green foliage. Similar to Browni. These are beauties.

18-24 in. -----	3.75
2-2½ ft. -----	4.50

THUJA OCC. GLOBOSA. Globe Arborvitae.

12-15 in. beauties from our Maplewood Farm 1.25
15-18 in. not as dense as above, from Block 14 1.25
Thuja occ. globosa, so round, firm and fully packed that they have plenty of customer appeal.



FLOWERING SHRUBS

Nice, young, vigorous heavy stock. 50 or more of one kind and grade at 100 rate.

B&B SCHEDULE FOR SHRUBS

When time and available labor allow, we will B&B shrubs for the following charges in addition to the bare root prices shown.

2-3 ft.	40¢	3-4 ft.	50¢		
4-5 ft.	60¢	5-6 ft.	75¢	Each	Each
				Per 10	Per 100

CYDONIA JAPONICA. Red Flowering Quince.

2-3 ft. ----- .75

CYDONIA JAPONICA NIVALIS. Pure White. An extra-ordinary novelty that sells on sight when in bloom.

2-3 ft. ----- 1.50 1.35

3-4 ft. ----- 2.00

FORSYTHIA LYNWOOD GOLD. The recent introduction so greatly acclaimed. Bright yellow, upright grower.

4-5 ft. heavy ----- .85 .75

5-6 ft. heavy ----- 1.15 1.00

6-7 ft. heavy ----- 1.50

LAGERSTROEMIA INDICA. Crepe Myrtle.

Use Virginia grown Crepe Myrtle for increased hardiness.

"Red Star" - Popular deep shade with long panicles of flowers.

1 gal. Cans 15-18. few ----- .85

2-3 ft. Egg Cans few ----- 1.50

4-5 ft. B&B few ----- 3.50

5-6 ft. B&B few ----- 4.50

"William Toovey" - Deepest red of all Crepe Myrtles. Large panicles.

2-3 ft. B&B ----- 1.50

Few larger

SPIRAEA VAN HOUTTEI.

3-4 ft. heavy ----- .75

4-5 ft. heavy ----- 1.00

5-6 ft. heavy ----- 1.50 1.15

Also Extra heavy specimens

Shade and Flowering Trees

The extra charge for B&B on Shade Trees is 50%

EACH PER 10

ACER DASYCARPUM. Silver-leaf Maple. Fast growing tree for quick shade. Straight trunk, well branched.

6-8 ft. 1-1¼ in. Cal. b. r. ----- 2.25

7-9 ft. 1¼-1½ in. Cal. b. r. ----- 3.00

ACER PALMATUM PURPUREA. Redleaf Japanese Maple. Grown from seedlings selected for deep red color. Well branched. Deep red in spring, fade some in summer.

18-24 in. B&B ----- 2.50

2-3 ft. B&B ----- 3.50

ACER PLATANOIDES. Norway Maple. Very Nice Trees.

13-15 ft., 2½-3 in. Cal. B&B ----- 20.00

3-3½ in. Cal. B&B ----- 30.00

ACER PLAT. "Crimson King". Plant Patent No. 735. The justly famous Maple whose leaves stay red all summer. Branched and transplanted trees with good caliber.

5-6 ft. b. r. ----- 4.00



BIG TREES. we have lots of nice ones like these, know how to dig and handle them, and welcome the chance to serve you with them if you will let us have your orders in advance so we can dig in January and February. We use treated burlap for this and protect the balls in sawdust - ready to go when you say the word.

ACER RUBRUM. Scarlet or Swamp Maple. Few trees various sizes. Prices same as Acer Saccharum.

ACER SACCHARUM. Sugar or Hard Maple. Straight, well formed trees.

10-12 ft., 1½-1¾ in. Cal. b. r. --- 6.00 B&B 9.00

10-12 ft., 1¾-2 in. Cal. b. r. --- 8.00 B&B 12.00

12-14 ft., 2-2½ in. Cal. b. r. --- 11.50 B&B 17.25

14-16 ft., 2½-3 in. Cal. ----- B&B 25.00

Few larger, priced individually

BETULA ALBA. Clump Birch. Stems green but will turn white next year.

5-6 ft. 2 stem B&B ----- 2.50

BETULA ALBA. White Birch. Handsome young trees, single stem branched to the ground.

10-12 ft. 2-2½ in. Cal. B&B ----- 12.50

12-14 ft. 2½-3 in. Cal. B&B ----- 15.00

12-14 ft. 3-3½ in. Cal. B&B ----- 20.00

CORNUS FLORIDA. White Dogwood. Excellent sturdy well branched. Few trees, various sizes.

CORNUS FLORIDA RUBRA. Pink Dogwood. Well branched, stocky.

7-8 ft. heavy B&B ----- 12.00

8-9 ft. priced B&B individually

CORNUS FLORIDA RUBRA "Cherokee Chief".

Plant Patent No. 1710. The really red flowering Dogwood. A splendid new tree.

3-4 ft. B&B ----- 5.00

EACH PER 10

PRUNUS SERRULATA KWANZAN. Pink upright double flowering Cherry.
 4-5 ft. b. r. ----- 3.00
 5-6 ft. b. r. ----- 3.75
PRUNUS SUBHIRTELLA PENDULA. Weeping Jap. Cherry, No. 1 heads, budded on standards. Single and double flowering varieties.
 5-6 ft. b. r. ----- 5.50
QUERCUS PALUSTRIS. Pin Oak. Few of each size.
 7-9 ft. 1½-1¾ in. Cal. ---- b. r. 5.00 B&B 7.50
 8-10 ft. 1¾-2 in. Cal. ---- b. r. 7.00 B&B 10.50
 10-12 ft. 2-2½ in. Cal. ---- b. r. 10.00 B&B 15.00
 12-14 ft. 2½-3 in. Cal. ---- B&B 20.00
 3-3½ in. Cal. ---- B&B 30.00

Prices larger trees below.

QUERCUS RUBRA. Red Oak.
QUERCUS PHELLOS. Willow Oak.
QUERCUS PRINUS. Chestnut Oak.
 Few trees quoted on request.
QUERCUS VIRGINIANA. Live Oak. The evergreen Oak of the South, associated with the hanging moss, song and story. Few of each size.
 7-9 ft. B&B 2-2½ in. Cal. ----- 15.00
 8-10 ft. B&B 2½-3 in. Cal. ----- 20.00
 10-12 ft. B&B 3-3½ in. Cal. ----- 30.00
 11-13 ft. B&B 3½-4 in. Cal. ----- 40.00

SALIX BABYLONICA. Weeping Willow. Vigorous young trees with good heads and caliber.
 1½-2 in. Cal. ----- b. r. 3.50 B&B 5.00
 2-2½ in. Cal. ----- B&B 10.00
 2½-3 in. Cal. ----- B&B 15.00

SALIX ELEGANTISSIMA. Golden bark Weeping Willow, very attractive in winter. Available in single stem or "Clump" form (low forked).
 5-7 ft., 1-1¼ in. Cal. ----- b. r. 1.50 B&B 2.25
 6-8 ft., 1¼-1½ in. Cal. ---- b. r. 2.25 B&B 3.00
 7-9 ft., 1½-2 in. Cal. ----- b. r. 3.50 B&B 5.00
 8-10 ft. 2-2½ in. Cal. ----- B&B 10.00

LARGE TREE PRICES: Oaks, Rubra and Norway Maples. Sugar Maples slightly higher.
 2½-3 in. Cal. ----- B&B 20.00
 3-3½ in. Cal. ----- B&B 30.00
 3½-4 in. Cal. ----- B&B 42.00
 4-5 in. Cal. ----- B&B 57.00
 5-6 in. Cal. ----- B&B 75.00

CANNED STOCK

	Each
Euonymus Japonica	
1 gal. -----	.75
Gardenia florida	
1 gal. cans 18-24 in. slender -----	1.00
Ilex Burfordii	
1 gal. Lario Cans. and Plantainers 15-18 in. -----	1.00
Ilex Convexa	
1 gal. cans 12-15 in. -----	1.00
Ilex cren. Helleri.	
1 gal. cans 6-8 in. -----	1.25
Ilex Rotundifolia	
1 gal. cans 12-18 in. -----	.95
Lagerstroemia - Crepe Myrtle See regular listing.	
Osmanthus Aquifolium	
1 gal. Lario cans 15-18 in. -----	1.00
Pyracantha Lalandi	
1 gal. cans 15-18 in. -----	.85

Malus - Flowering Crabapple

One of our specialties. Choice varieties - well branched nice trees.

AT ATTRACTIVE PRICES

10% Discount for 100 or more Crabapples.
ALMEY. A recently introduced variety. It has large blossoms of Fiery Crimson Petals, White Markings at the base of each, giving the effect of a five pointed star. The scarlet fruits are retained a long time. Very hardy, disease resistant.

AT NEW LOW PRICES

4-5 ft. -----	b. r. 1.15 B&B	1.50
5-6 ft. -----	b. r. 1.50 B&B	2.00
5-7 ft. 1-1¼ in. Cal. -----	b. r. 2.00 B&B	2.50
6-8 ft. 1¼-1½ in. Cal. -----	b. r. 2.75 B&B	3.50
1½-1¾ in. Cal. -----	b. r. 4.00 B&B	5.00

ATROSANGUINEA. Carmine Crabapple. Like Floribunda except flowers are red.

4-5 ft. few -----	b. r. 1.15 B&B	1.50
5-6 ft. few -----	b. r. 1.50 B&B	2.00

FLORIBUNDA. Pink buds opening to light pink flowers.

5-6 ft. few -----	b. r. 1.50 B&B	2.00
6-7 ft. few -----	b. r. 2.50 B&B	3.00

SCHIEDECKERI. Semi-double. Pink. Same prices as Almey. Same sizes except no 4-5 ft.

SPECTABILIS. Very showy pink flowers, slender erect grower.

5-6 ft. -----	b. r. 1.15 B&B	1.50
6-7 ft. ¾-1 in. Cal. -----	b. r. 1.50 B&B	2.00
7-8 ft. 1-1¼ in. Cal. -----	b. r. 2.50 B&B	3.00

ZUMI CALOCARPA. A leading landscape variety with pinkish-white flowers and bright red fruit.

3-5 ft. 1-1¼ in. Cal. -----	b. r. 1.50 B&B	2.00
-----------------------------	----------------	------

NOW HERE ARE THE REAL CRAB BARGAINS

ELEYI. Red flowers, red foliage, and large red fruit borne in abundance on vigorous trees. The best variety we know.

HOPA. Red foliage, red flowers and red fruit, on a fast growing tree of vertical habit.

NEIDZWETSKYANA. "Red Vein", similar to Eleyi.

WONDERFUL GROWING SEASON GIVES US LARGE QUANTITIES OF BEAUTIFUL TREES OF THESE VARIETIES IN LARGE SIZES. WE ARE PASSING THE BENEFIT ON TO YOU WITH THESE LOW, LOW PRICES.

5-6 ft. Hopa only -----	b. r. 1.15 B&B	1.50
6-7 ft. 1-1¼ in. Cal. --	b. r. 1.50 B&B	2.00
7-8 ft. 1¼-1½ in. Cal. b. r. 2.25 B&B	3.00	
1½-1¾ in. Cal. b. r. 3.50 B&B	4.50	
1¾-2 in. Cal. --	B&B 7.50	
2-2½ in. Cal. --	B&B 10.00	
2½-3 in. Cal. Neidzwetskyana only	B&B 15.00	

10% Discount on 100 or more Crabapples

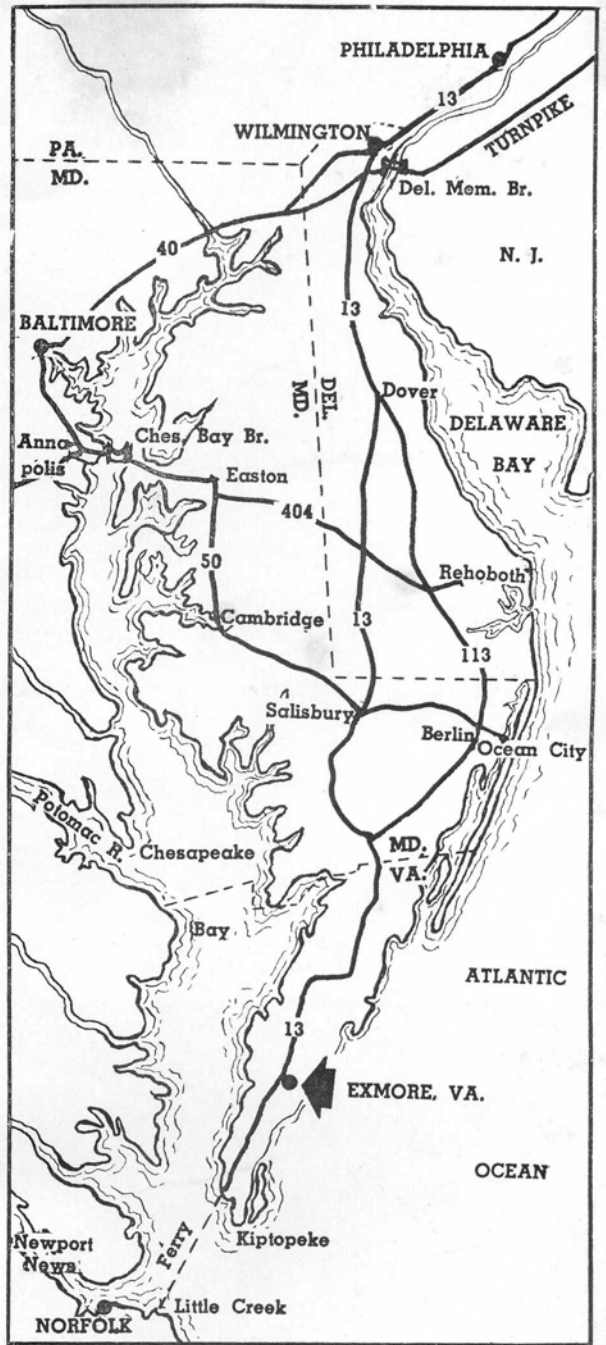
Let us have your Crab order early so we can dig ahead, treated burlap, and keep them for you as they start so early here that they cannot be dug late.



The Tankard Packing Shed and one of the delivery trucks, capacity 12 tons. Your material is well protected from the weather and cared for by experienced drivers.

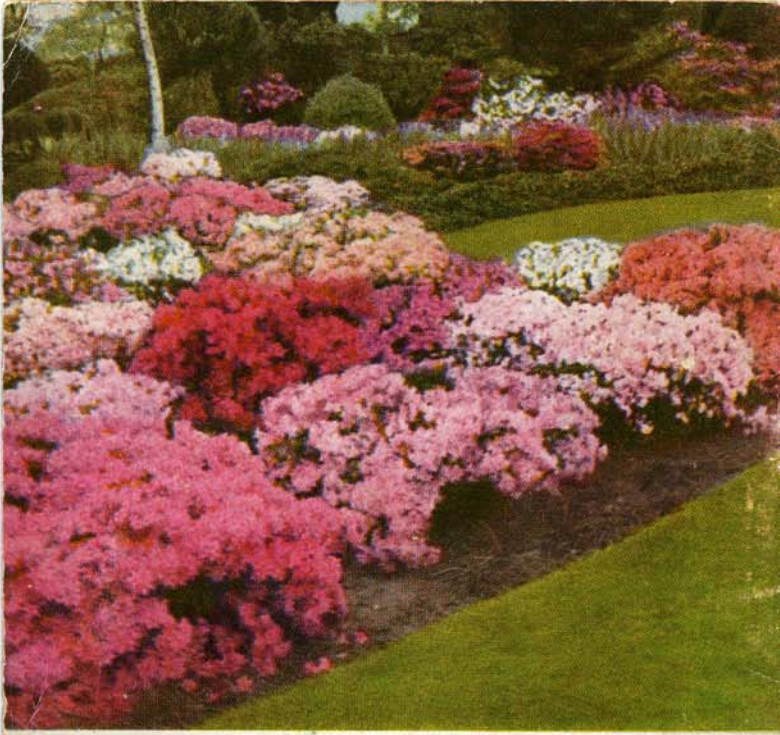
For economical delivery, have us ship by our trucks, hired trucks, or send your own. We often arrange combination truckloads to more than one customer. Overnight deliveries to New York and other Eastern points at reasonable cost, and next day arrivals as far as Ohio.

Taxus intermedia T-31. We have a nice supply of handsome specimens of this semi-spreading Taxus.



Exmore, Va. is located on the Del-Mar-Va Peninsula. Readily reached by Hy. U. S. 13, Bus, or private plane to Weirwood or Parksley; 175 miles South of Delaware Memorial Bridge.

Connected with Norfolk and Newport News by fast car and truck ferry, running every fifty-five minutes. New bridge-tunnel under construction.



AZALEA, THE TANKARD LEADER



ILEX BURFORDI, ROOT PRUNED SPECIMENS